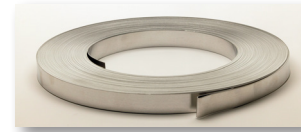


INSUL-MATE™
RPR Insul-Mate™ Strapping

STRAPPING

Insul-Mate™ strapping is slit from prime T304 and T316 (ASTM A-240 & ASTM C-1767), Aluminum alloy 3003, 3105 (ASTM B209) and Galvanized Steel G90 LFO (ASTM A-653). All strapping is edge conditioned for safe handling. We offer Aluminum Strapping in 3/8", 1/2", 3/4", and 1 1/4" widths x .020" thickness, Stainless Steel Strapping in 3/8", 1/2", and 3/4" x .015" and .020" thicknesses, and Galvanized Strapping in 1/2" and 3/4" widths x .020" thickness. We can also supply 1 1/4" width x .020" and .024" thicknesses in Stainless Steel.

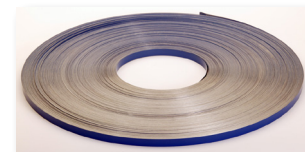


PACKAGING

ALUMINUM	STAINLESS STEEL	GALVANIZED
3/8" – 8# & 200' Rolls	3/8" – 22#, 100# osc., & 200' Rolls	-
1/2" – 10#, 35# osc., & 200' Rolls	1/2" – 28#, 100# osc., & 200' Rolls	1/2" – 28# Rolls
3/4" – 15#, 35# osc., & 200' Rolls	3/4" – 42#, 100# osc., & 200' Rolls	3/4" – 42# Rolls
1 1/4" – 25# Rolls	1 1/4" – 42# Rolls	-

COLOR CODED STRAPPING

Insul-Mate™ color-coded strapping is designed to be used as a line identifier. Stainless Steel and Aluminum are coated in industry standard colors. Insul-Mate™ color-coded Stainless Steel strapping is slit to 1/2" and 3/4" widths from T304/316 Stainless Steel and is available in ribbon wound or 100# oscillated coils. Insul-Mate™ color-coded Aluminum strapping is also available in 1/2" width and is slit from ASTM B209 specification Aluminum in ribbon wound coils. Both Stainless Steel and Aluminum strapping are coated with a unique two coat baked on paint system which offers superior resistance to fading, cracking, and peeling.



INDUSTRY STANDARD COLORS		
Stainless Steel	Blue/Black	Stamped No Asbestos
Stainless Steel	Blue/Blue	Stamped No Asbestos
Stainless Steel	White/Red	-
Stainless Steel	Marine Corp Green	-
Aluminum	Red/Blue	Stamped No Asbestos

Special colors available on special quote and minimum quantities.